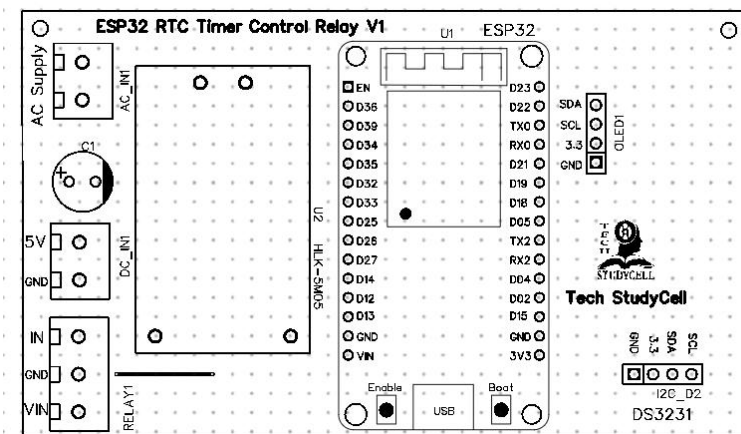


Project: ESP32 RTC module control Relay with 0.96" OLED

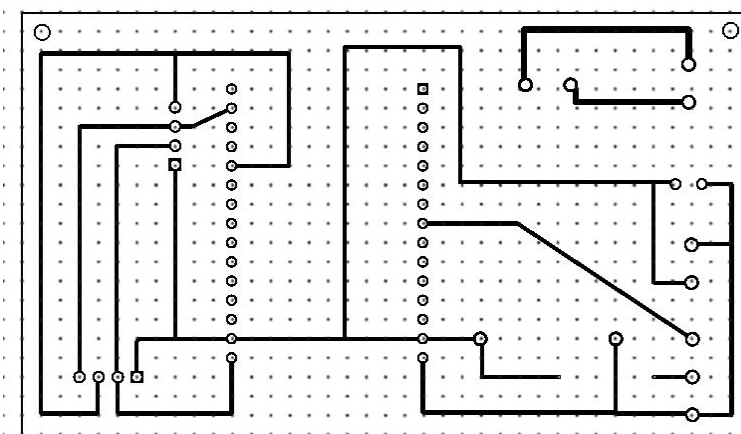
****Please print this page on A4 page, also check the PCB Layout Dimension.**



PCB Dimension:

Width (X): 96.5 mm

Height (Y): 56 mm



Related Tutorial Video Link:

For more such project visit: <https://iotcircuitHub.com>

Also Finds Us @

Facebook: <https://www.facebook.com/techstudycell/>

Instagram: <https://www.instagram.com/techstudycell/>

Telegram: <https://t.me/techstudycell/>