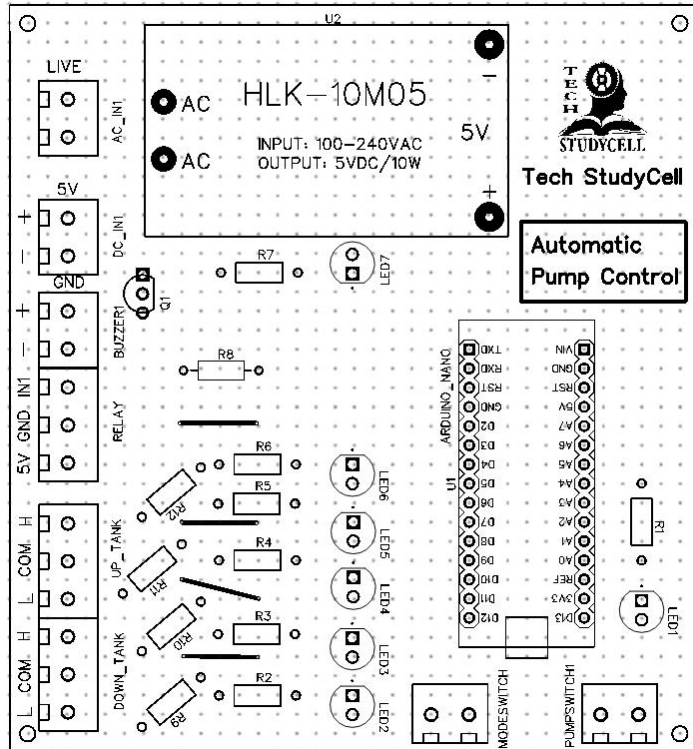


Project: Automatic Water Pump Control using Arduino Nano

****Please print this page on A4 page, also check the PCB Layout Dimension.(W)**



PCB Dimension:

Width (X): **91.3 mm**

Height (Y): **99 mm**

Also Finds Us @

Facebook:

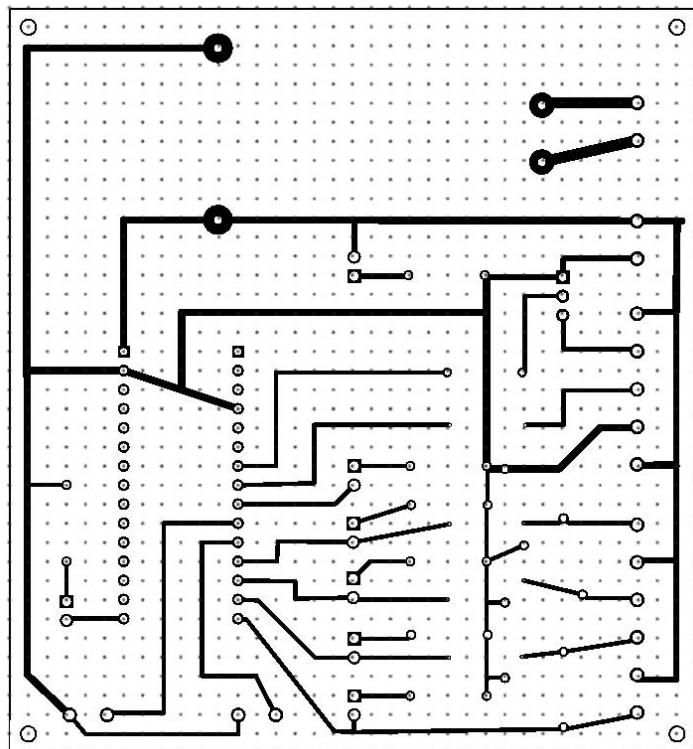
<https://www.facebook.com/techstudycell/>

Instagram:

<https://www.instagram.com/techstudycell/>

Telegram:

<https://t.me/techstudycell/>



Related Tutorial Video Link:

For more such project visit: <https://iotcircuitHub.com>