

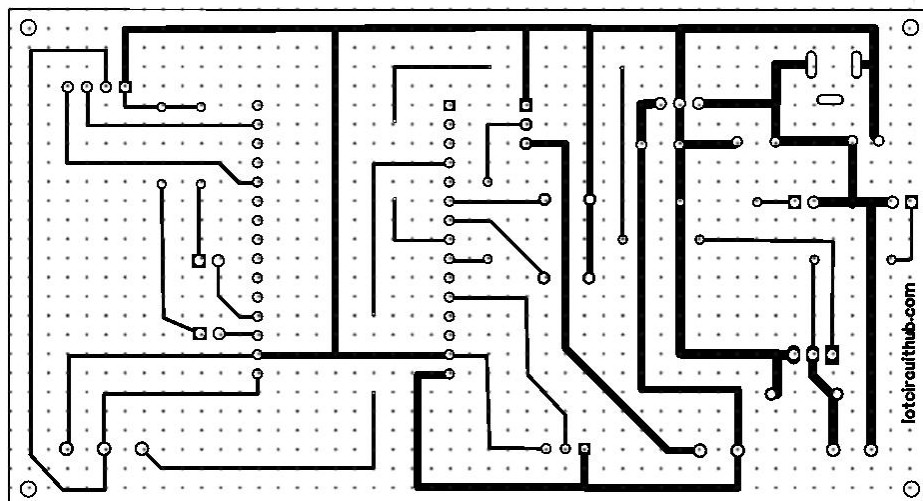
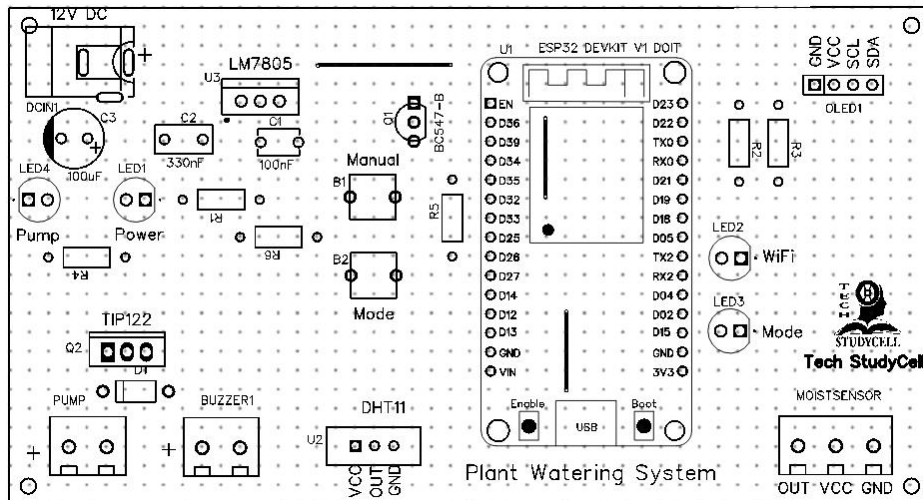
Project: Plant Watering system using ESP32, Moisture Sensor, DHT11 & 0.96" OLED

****Please print this page on A4 page, also check the PCB Layout Dimension.**

PCB Dimension:

Width (X): 122 mm

Height (Y): 65.5 mm



Related Tutorial Video Link:

For more such project visit: [https:// iotcircuithub.com](https://iotcircuithub.com)

Also Finds Us @

Facebook: <https://www.facebook.com/techstudycell/>

Instagram: <https://www.instagram.com/techstudycell/>

Telegram: <https://t.me/techstudycell/>